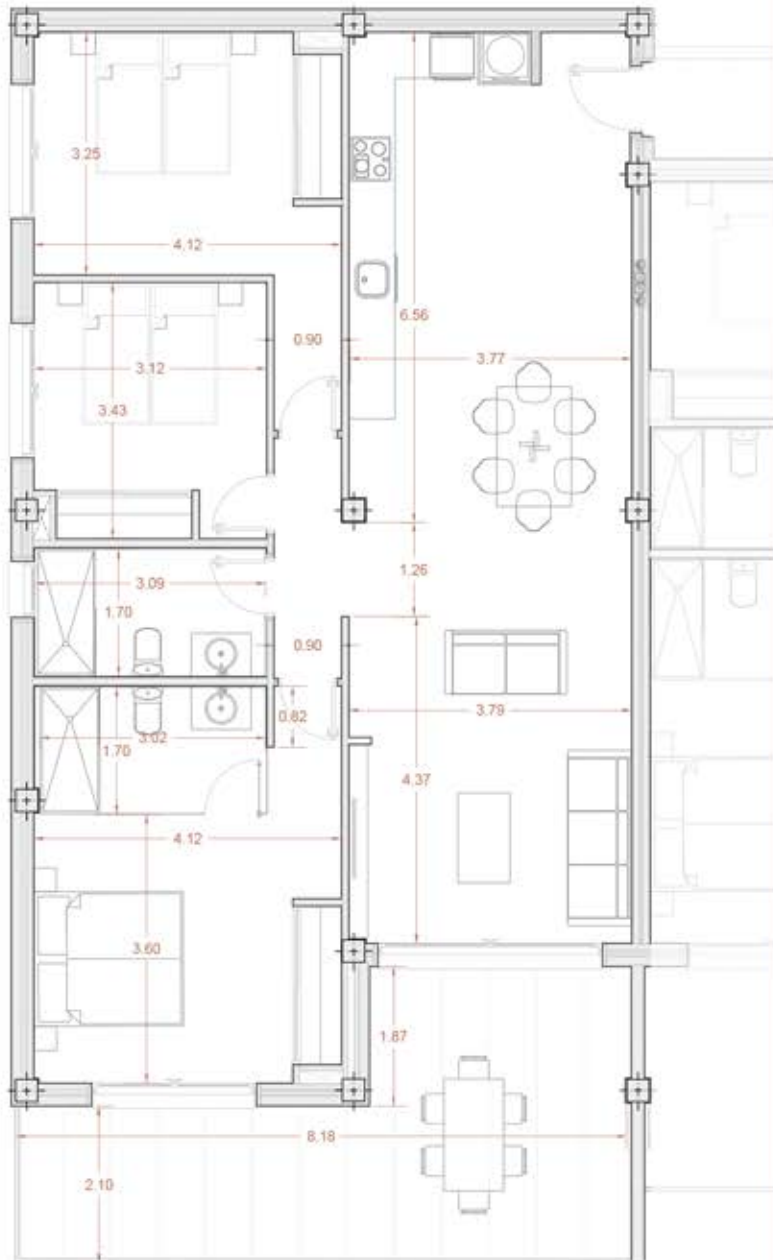


THE IMAGES REFER TO APPROXIMATE SOLUTIONS AND ARE NOT BINDING WITH THE FINAL PROJECT

1ST FLOOR TYPE A
BLOCK 1 HOUSE 11



1 X BASEMENT PARKING



BUILT SURFACE	141,59 M2
LIVING ROOM KITCHEN	45,50 M2
BEDROOM 1	16,25 M2
BEDROOM 2	15,00 M2
BEDROOM 3	10,50 M2
BATHROOM 1	5,10 M2
BATHROOM 2	5,25 M2
CORRIDOR	3,15 M2
COVERED TERRACE 50%	11,87 M2
TOTAL USABLE SURFACE	112,62 M2

