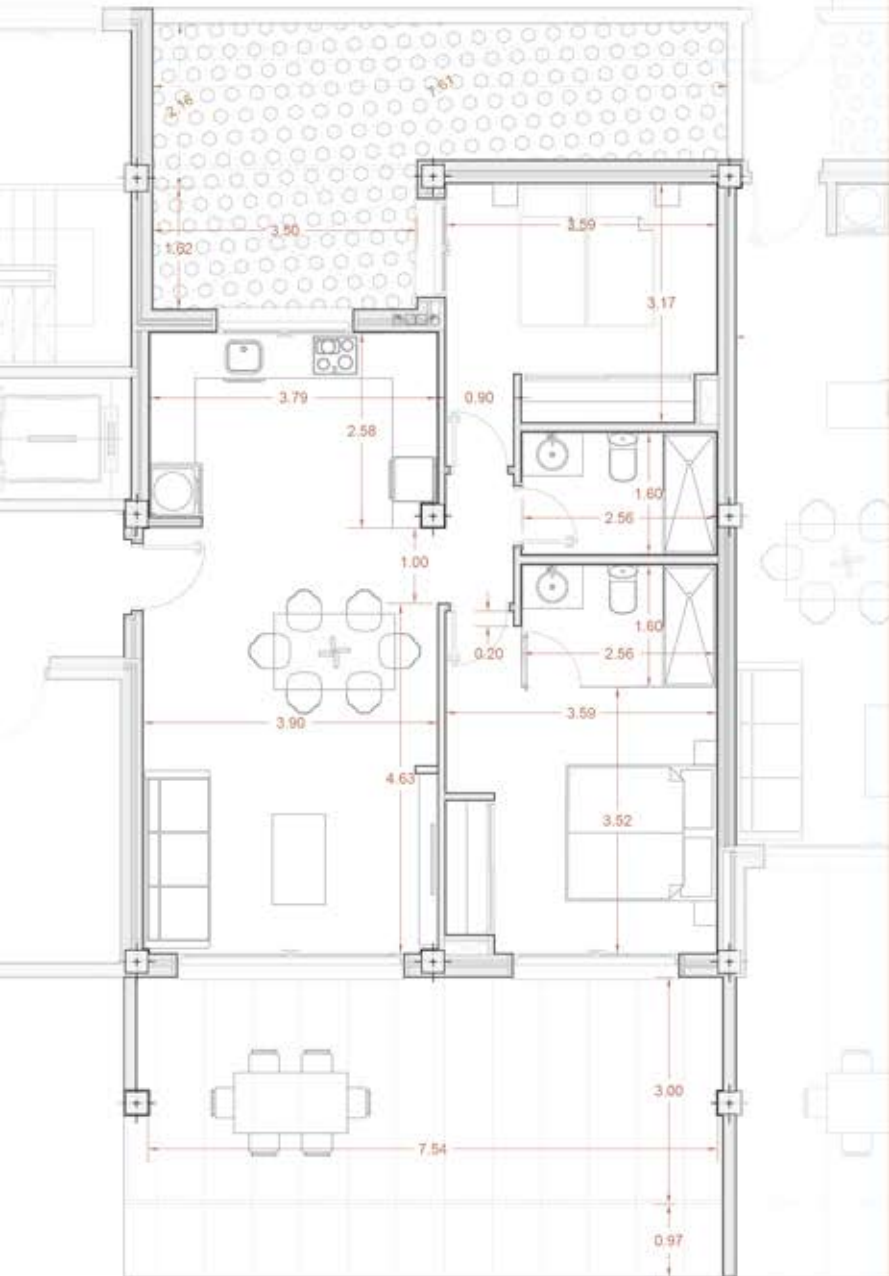


THE IMAGES REFER TO APPROXIMATE SOLUTIONS AND ARE NOT BINDING WITH THE FINAL PROJECT



PLOT INCL. HOUSE 130_m2
BLOCK 1 HOUSE 3



1 X BASEMENT PARKING



BUILT SURFACE	101,75 M2
LIVING ROOM KITCHEN	31,60 M2
BEDROOM 1	13,50 M2
BEDROOM 2	11,70 M2
BATHROOM 1	4,00 M2
BATHROOM 2	4,15 M2
CORRIDOR	1,75 M2
COVERED TERRACE 50%	11,50 M2
TOTAL USABLE SURFACE	78,20 M2
EXT.TERRACE + GARDEN	7,60M2 + 20M2

