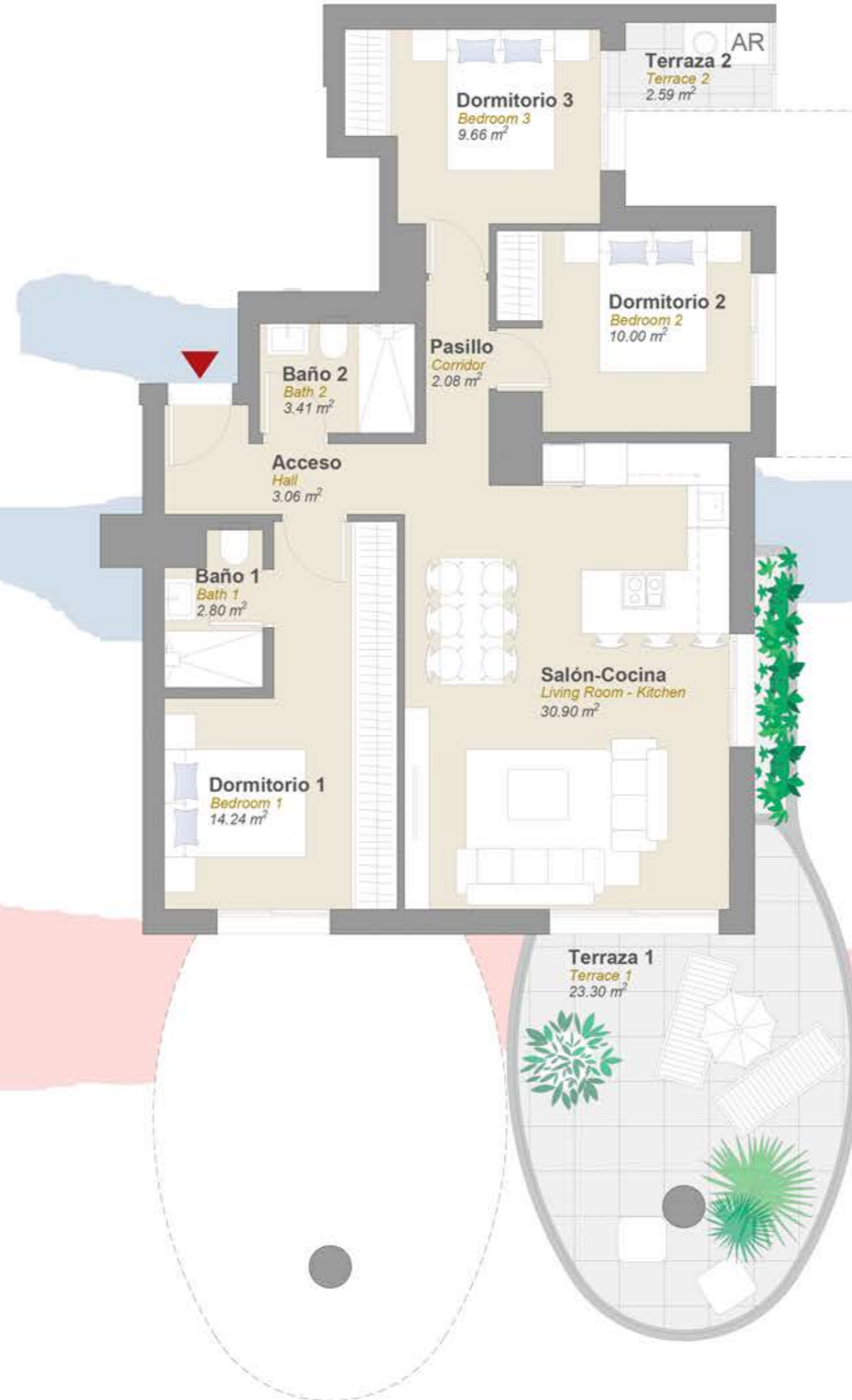
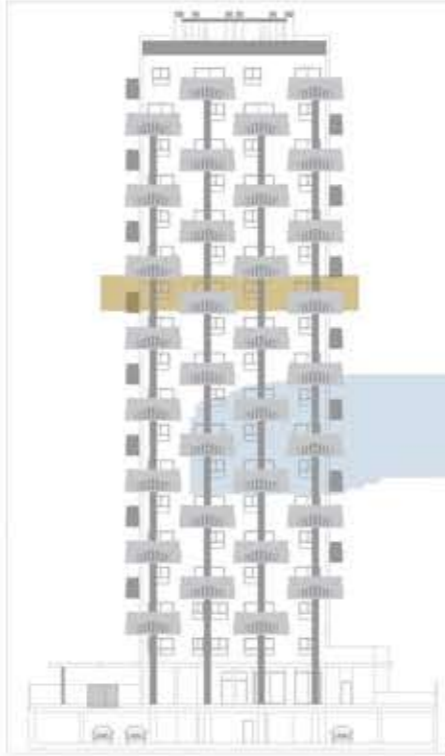




PLANTA 11



SUPERFICIES UTILES	m ²
ACCESO	3.06
ESTAR - COMEDOR - COCINA	30.90
DORMITORIO 1	14.24
BAÑO 1	2.80
DORMITORIO 2	10.00
DORMITORIO 3	9.66
BAÑO 2	3.41
PASILLO	2.08
TERRAZA 1	23.30
TERRAZA 2	2.59
SUP. UTIL TOTAL <small>VIVIENDA + TERRAZA</small>	102.04
SUPERFICIES CONSTRUIDAS	m ²
VIVIENDA + ZZCC	116.59
TERRAZAS	28.42
SUP. CONSTRUIDA TOTAL <small>VIVIENDA + TERRAZA + ZZCC</small>	145.01

