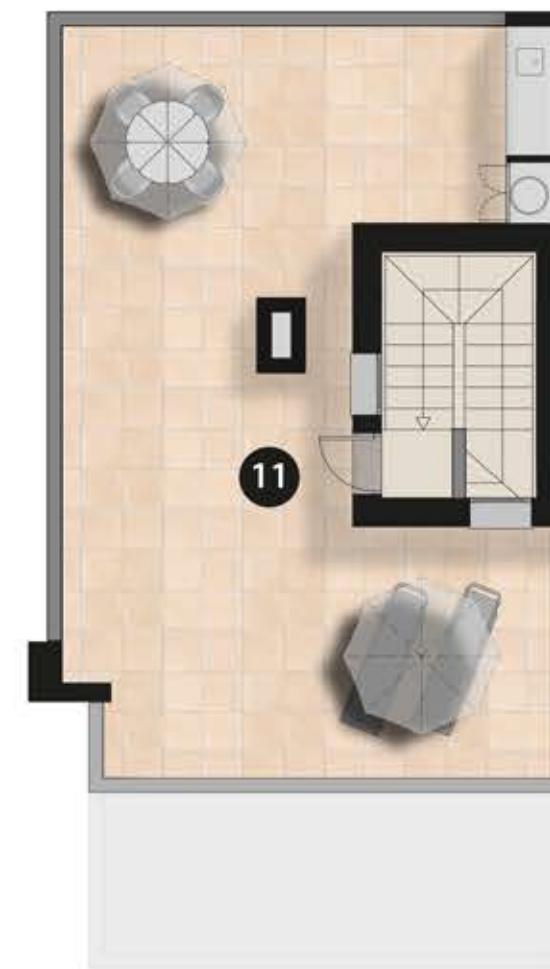


Ground floor



First floor



Solarium

**San Pedro del Pinatar**

**La Llana Beaches**

**Sporting and Activities**

**PLOT**

Plot	170,00 m <sup>2</sup>
Garden	80,40 m <sup>2</sup>
Pool	13,00 m <sup>2</sup>

**GROUND FLOOR**

1 Living room-Kitchen	38,10 m <sup>2</sup>
2 Hallway	1,60 m <sup>2</sup>
3 Bathroom 1	4,15 m <sup>2</sup>
4 Bedroom 1	10,05 m <sup>2</sup>

Total floor area 76,60 m<sup>2</sup>

**SOLARIUM**

11 Terrace	52,35 m <sup>2</sup>
------------	----------------------

**Ground Floor area**

Ground Floor area	76,60 m <sup>2</sup>
First Floor area	68,40 m <sup>2</sup>
Solarium	6,50 m <sup>2</sup>
<b>Total Built</b>	<b>151,50 m<sup>2</sup></b>

**FIRST FLOOR**

5 Hallway	5,00 m <sup>2</sup>
6 Bedroom 2	14,95 m <sup>2</sup>
7 Bedroom 3	17,65 m <sup>2</sup>
8 Bathroom 2	4,65 m <sup>2</sup>
9 Bathroom 3	4,75 m <sup>2</sup>
10 Terrace	14,40 m <sup>2</sup>

Total floor area 47,00 m<sup>2</sup>



+34 625 700 390 info@iberica-estates.com

HOME ENERGY EFFICIENCY **A**