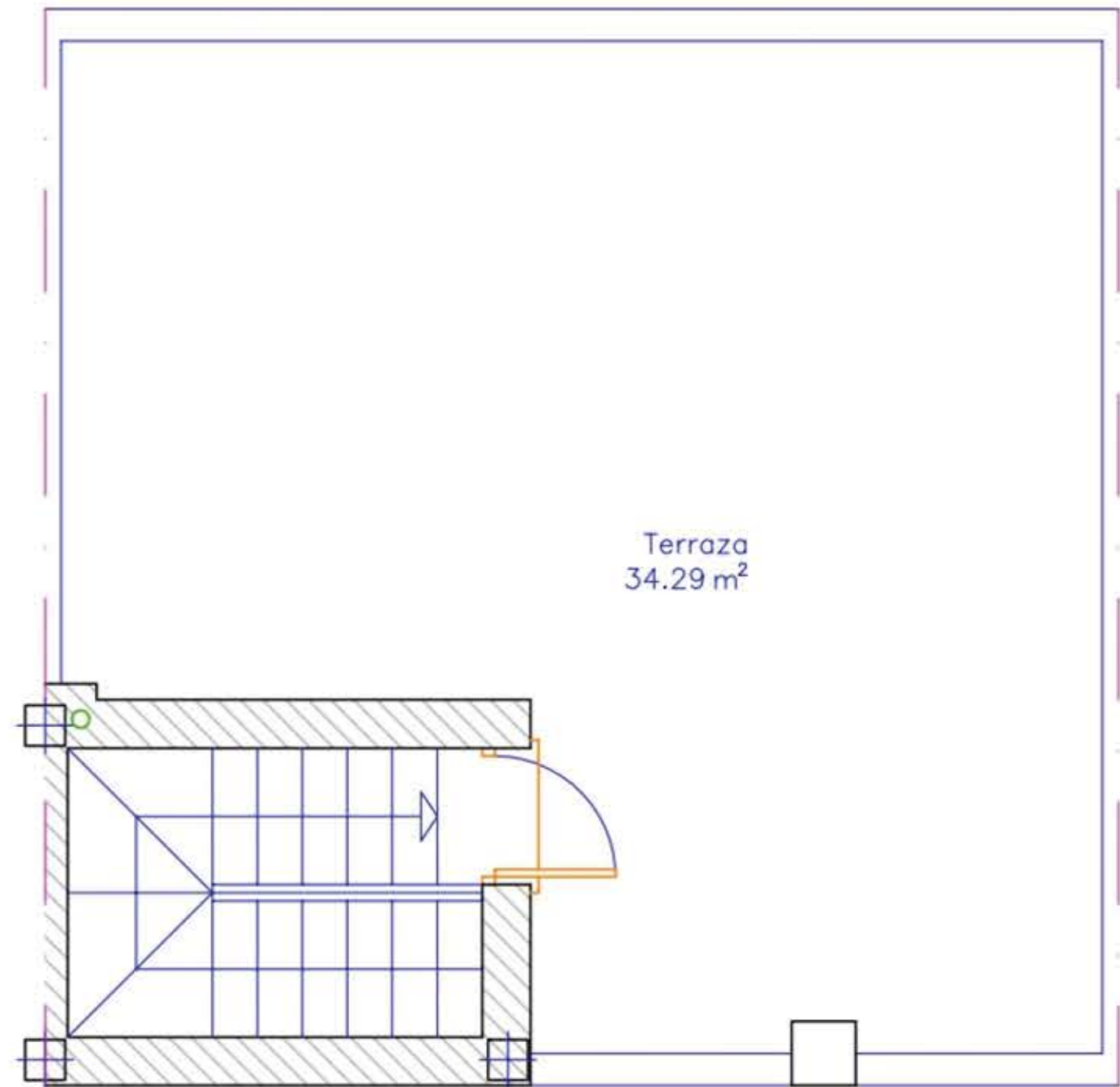
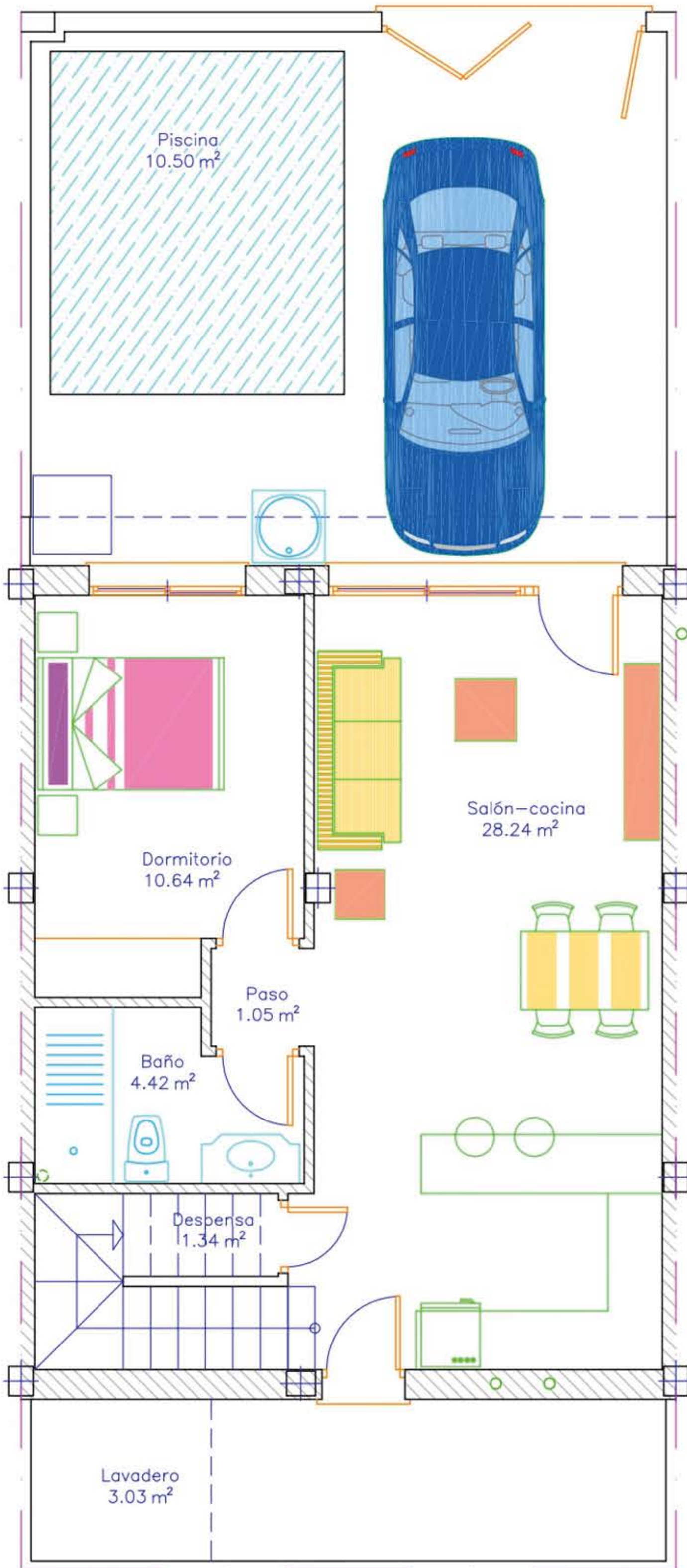
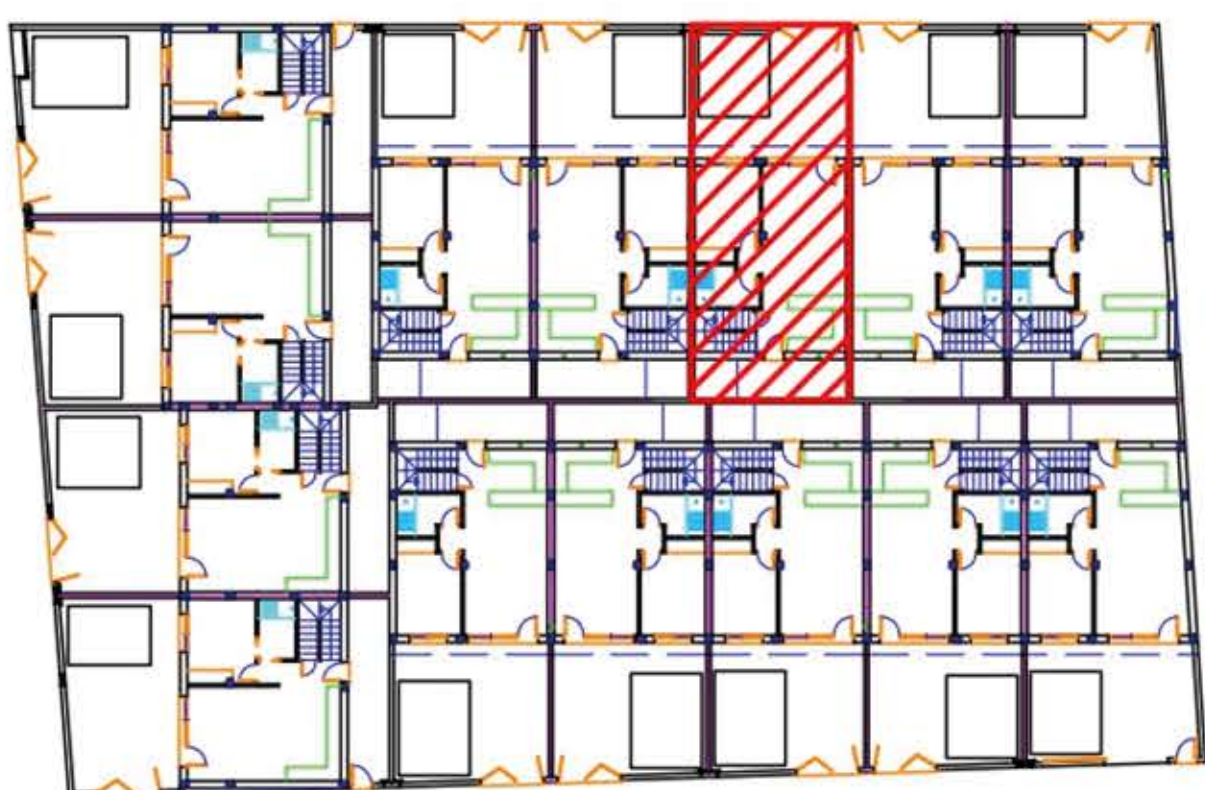
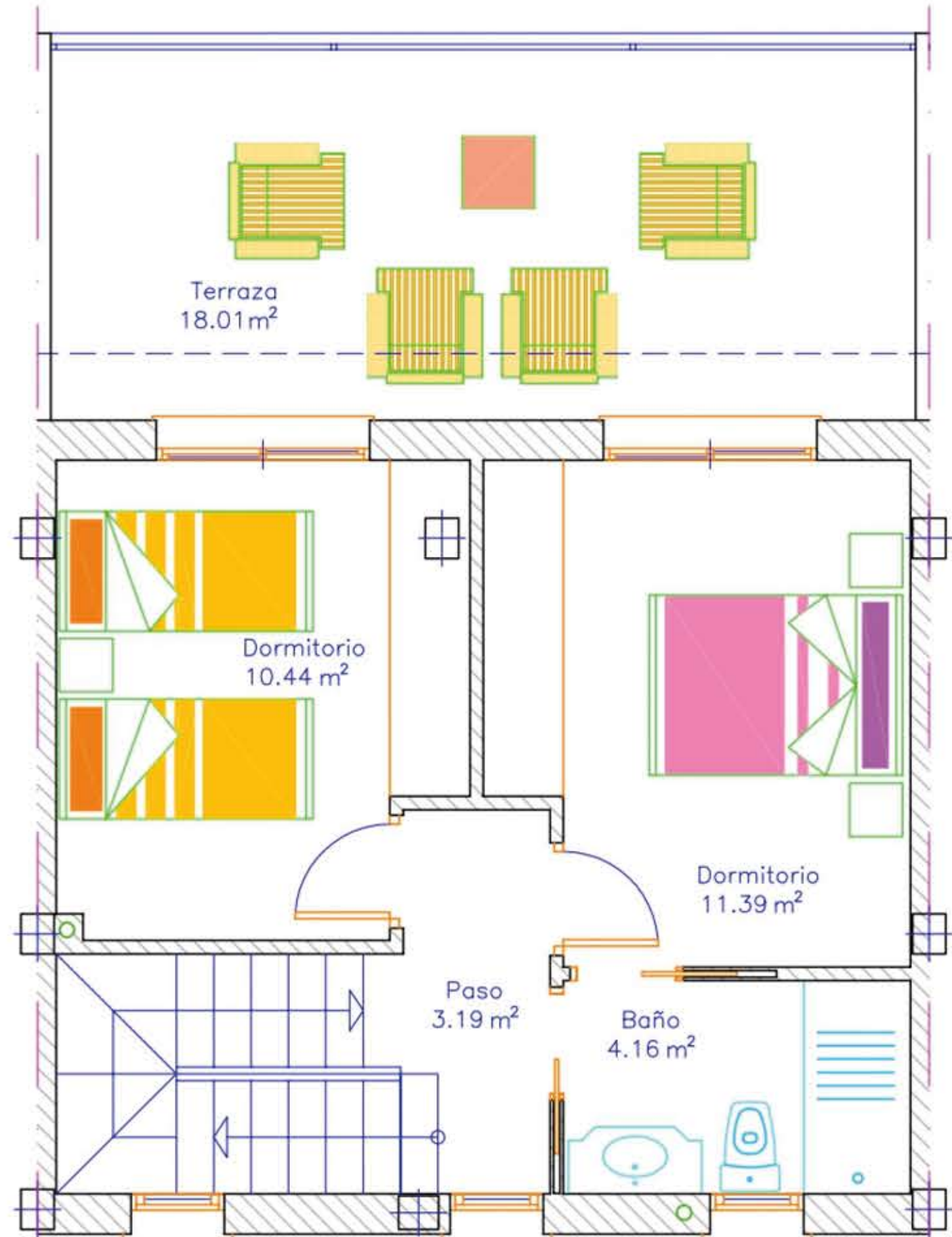


PLANTA 0, S.C.=61.84



PLANTA 1, S.C.=42.41



VIVIENDA 3

Sup. parcela=107,08m<sup>2</sup>  
 Sup. construida=107,09m<sup>2</sup>  
 Sup. terrazas=52,30m<sup>2</sup>  
 Sup. piscina=10,50m<sup>2</sup>