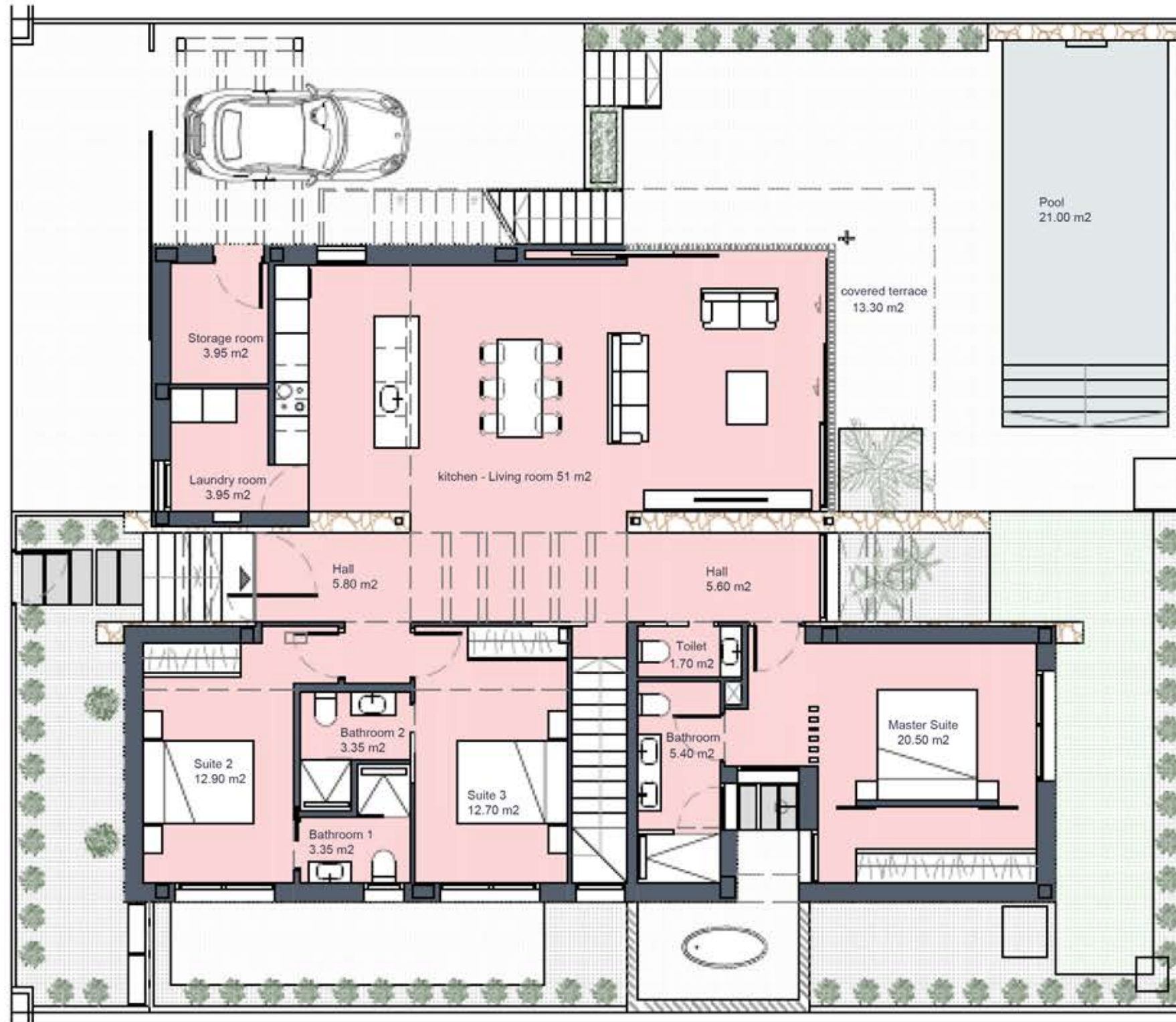


GROUND FLOOR



SURFACES

Villa Signature 10	385 m2
Superficie construida	
Ground floor	166,00 m2
Basement	162,70 m2
INTERIOR VIVIENDA	328,70 m2
Covered terrace	13,30 m2
Uncovered spaces (Ground floor)	205,70 m2
Solarium	55,90 m2
TOTAL OUTDOOR SPACES	274,90 m2

Documento de carácter informativo, no contractual. Puede sufrir variaciones por razones técnicas, legales o comerciales. El mobiliario y electrodomésticos son meramente decorativos y no incluidos.

This plan is for illustration purposes only and may be modified for technical, legal or commercial reasons. The furniture and appliances shown are purely decorative and are not included.